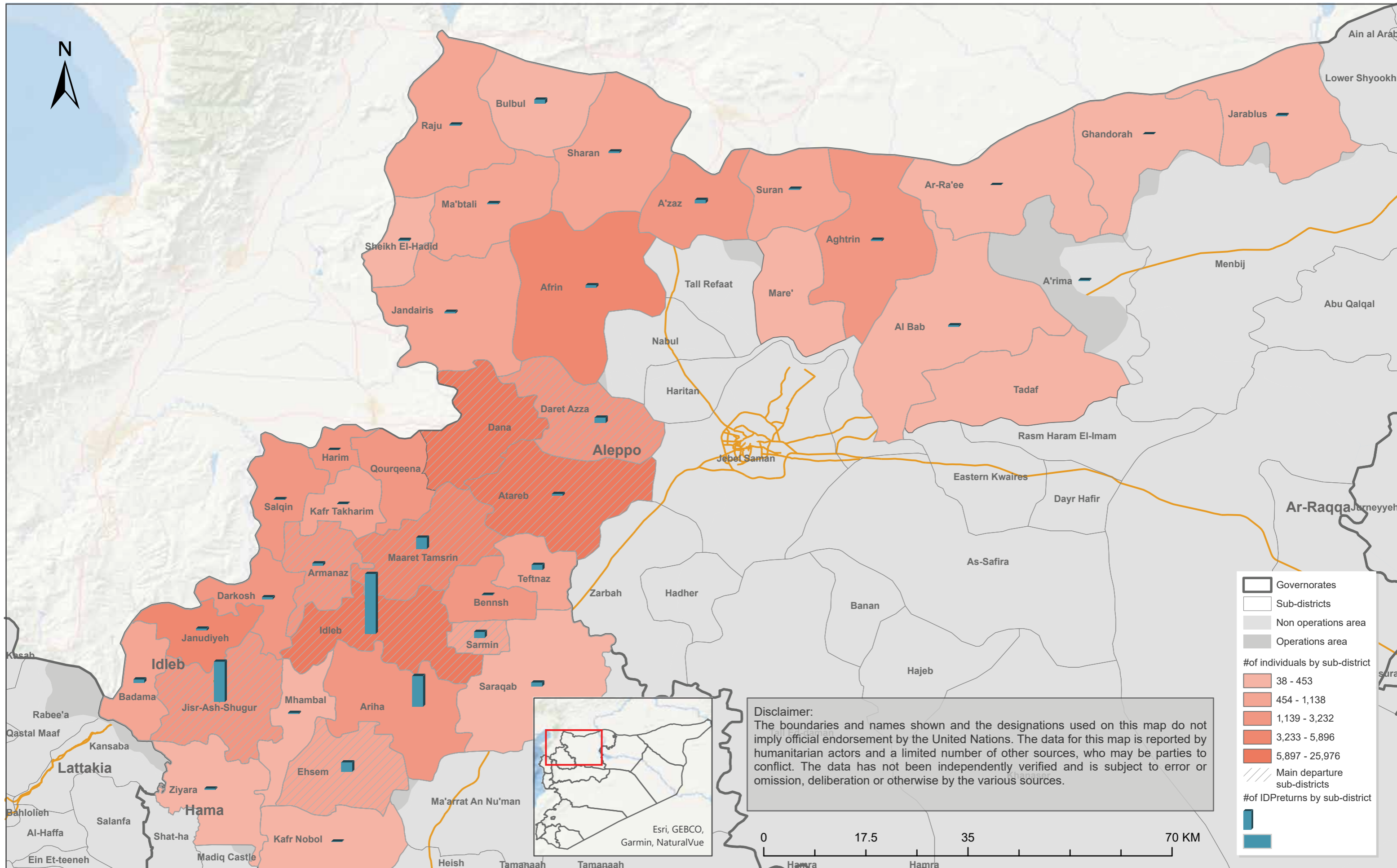


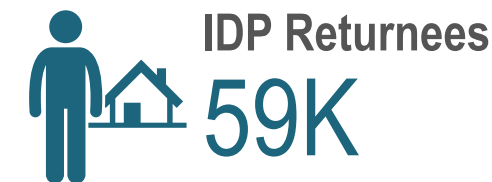
2024 (January - December) Displacement Update - North West Syria



2024 Annual Displacement Updates - North West Syria



Number of IDP population in IDP sites registered in ISIMM



CCCM Cluster has recorded the displacement movement in NWS during 2024, where the total number of displacement movements in 2024 is estimated at 111,000. The primary drivers of this significant displacement include:

Conflict in Lebanon: Over 4,280 individuals were displaced from GoS-controlled areas to Northwest Syria due to escalating tensions.

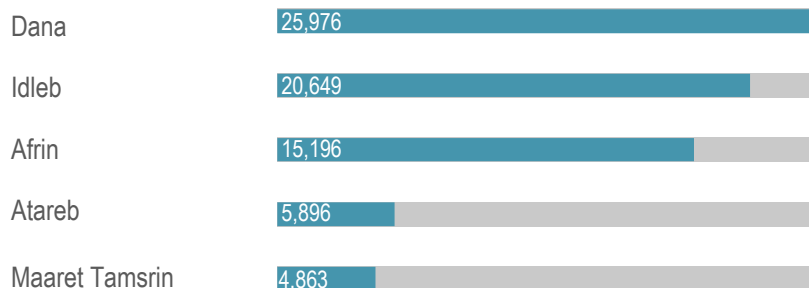
Escalation of Hostilities: A sharp increase in hostilities along frontline areas during the last quarter of 2024, particularly after November 30, triggered substantial displacement. More than 3,200 new arrivals sought shelter in reception centers, with an additional 26,270 individuals displaced from Aleppo and 22,138 from Idlib.

Humanitarian and Livelihood Challenges: Other displacement movements were driven by insufficient humanitarian aid, shrinking funding, and reduced livelihood opportunities.

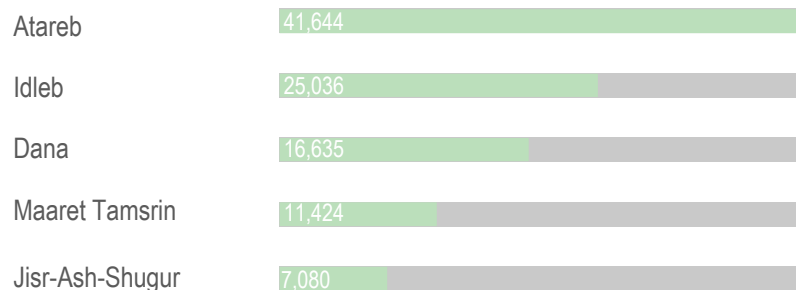
In total, 111,097 individuals were displaced, primarily from Atareb, Idlib, Dana, Maaret Tamsrin, and Jisr-Ash-Shugur sub-districts. However, over 53% of these displaced persons have since returned to their habitual residences, mainly in Ariha, Ehsem, Idlib, Jisr-Ash-Shugur, and Sarmin sub-districts.

Disclaimer: Returnees: refer to internal IDP movements from displacement sites to their homes or habitual residences in NWS.

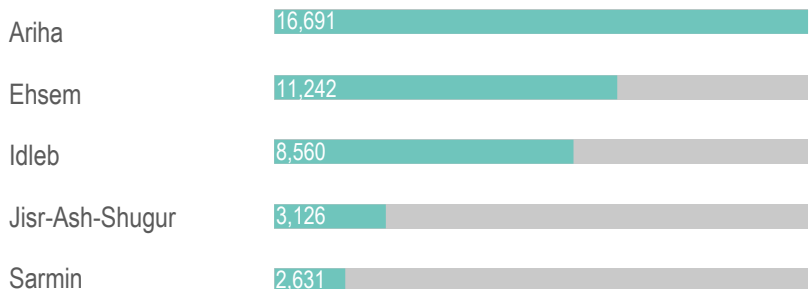
Top arrivals sub-districts



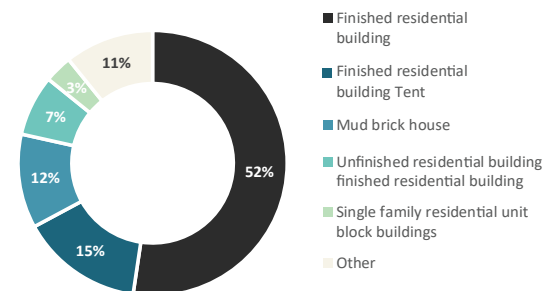
Top departure sub-districts



Top Returnee Destinations (Sub-district)



Shelter Type of Displaced People



* This figures reflect the number of movements in 2024, noting that individuals may have been exposed to multiple displacements, for that reason moving may vary.