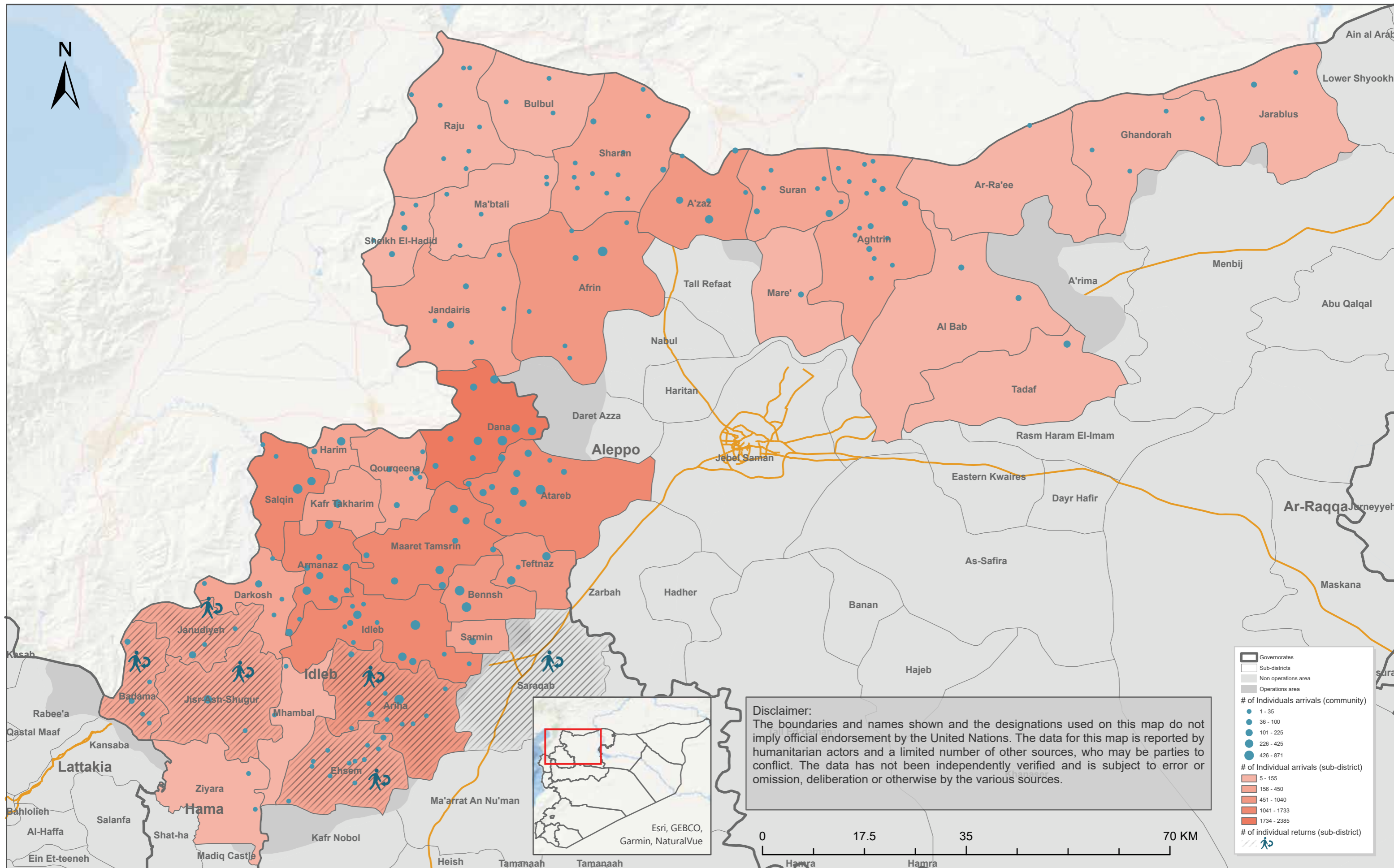
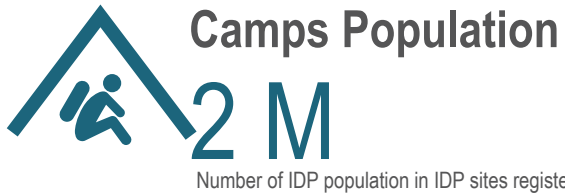


2024 Q3 (July - September) Displacement Update - North West Syria



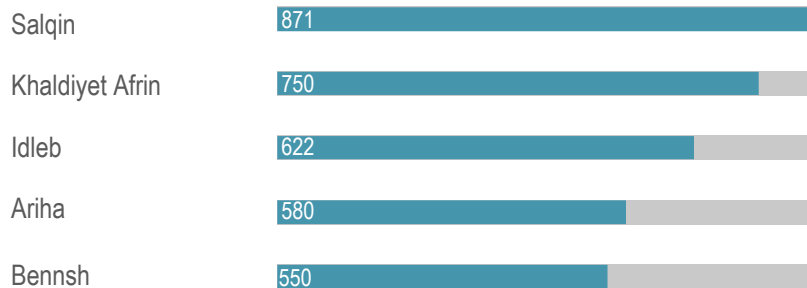


This report covers northwest Syria region for the period from 01/07/2024 to 30/09/2024. Data was collected from 902 accessible communities in Greater Idlib and Northern Aleppo governorates through KIs. In the third quarter over 18,000 people were displaced in Idlib and Aleppo, particularly from Sarmin, Dana, Maaret Tamsrin, Daret Azza, Atareb, Salqin, and Afrin due to mainly anticipation of future conflict escalation, reduced access to humanitarian assistance, increase in rental cost, loss of income and escalation of ground-based conflict. Most of the affected population arrived to Dana, Atareb, Idlib, and Armanaz sub-districts.

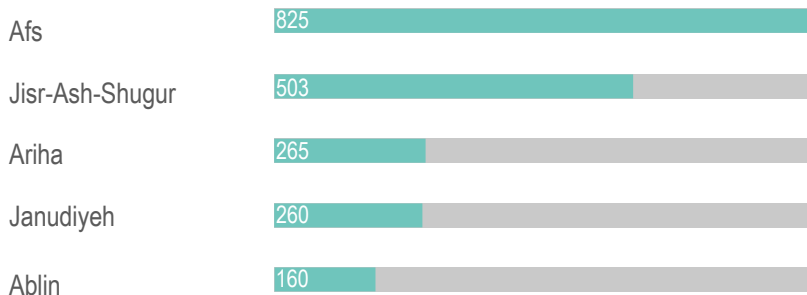
Disclaimer:

1. Displacements in north-west Syria (NWS) is highly fluid; IDP figures are rapidly changing due to dynamic environment and movements between sites and communities. CCCM will continue updating figures - quarterly.
2. Returnees: refer to internal IDP movements from displacement sites to their homes or habitual residences in NWS.

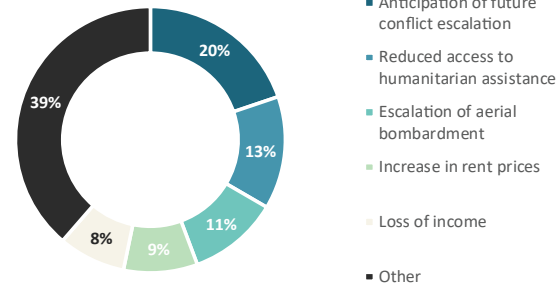
Top Arrival Communities



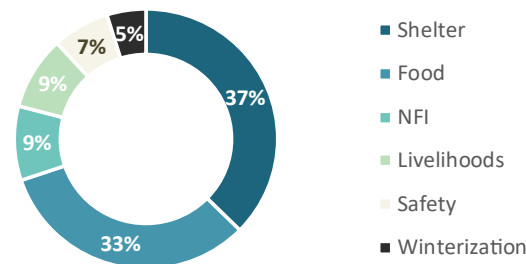
Top Returnee Destinations (Communities)



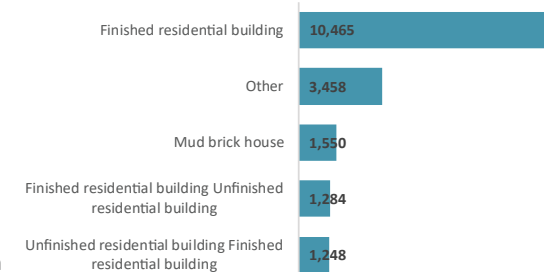
The push factors for departures



Priority needs



Arrivals' Shelter Types



* This figures reflect the number of movements between July-September 2024, noting that individuals may have been exposed to multiple displacements, for that reason moving may vary.