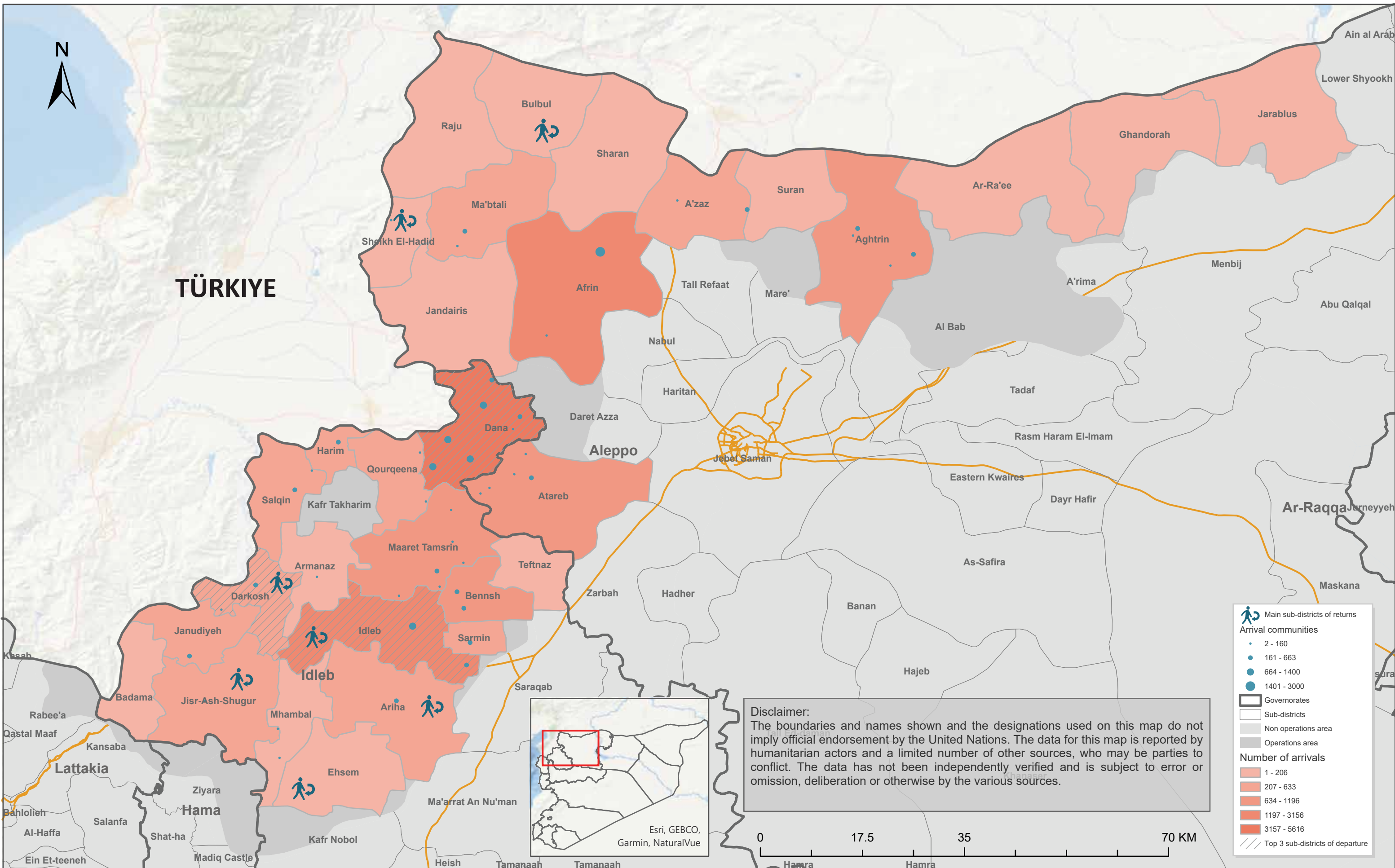
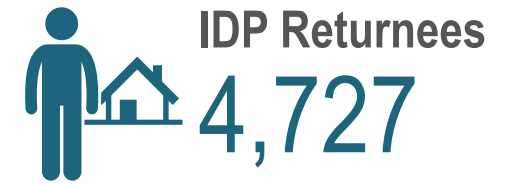


2024 Q1 (January - March) Displacement Update - North West Syria



Disclaimer:
 The boundaries and names shown and the designations used on this map do not imply official endorsement by the United Nations. The data for this map is reported by humanitarian actors and a limited number of other verified sources, who may be parties to conflict. The data has not been independently verified and is subject to error or omission, deliberation or otherwise by the various sources.

2024 Quarter 1: Displacement Updates

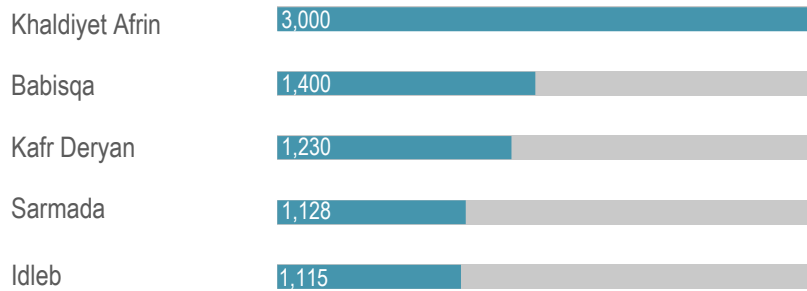


This report covers northwest Syria region for the period from 01/01/2024 to 31/03/2024. Data was collected from 897 accessible communities in Greater Idlib and Northern Aleppo and Hama governorates through KIs. In the first quarter over 20,000 people were displaced in Idlib and Aleppo, particularly from Darkosh, Dana, Idlib, Maaret Tamsrin and Bulbul due to mainly loss of income, increase in rental cost, escalation of aerial bombardment, and escalation of ground-based conflict. Most of the affected population arrived to Dana, Afrin, Idlib, Bennsh, and Maaret Tamsrin sub-districts.

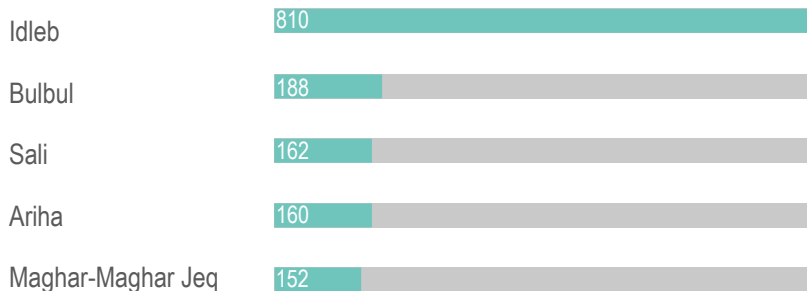
Disclaimer:

1. Displacements in north-west Syria (NWS) is highly fluid; IDP figures are rapidly changing due to dynamic environment and movements between sites and communities. CCCM will continue updating figures - quarterly.
2. Returnees: refer to internal IDP movements from displacement sites to their homes or habitual residences in NWS.

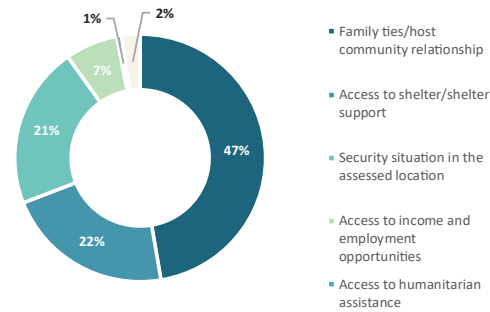
Top Arrival Communities



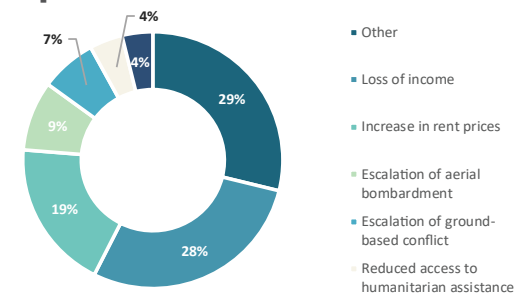
Top Returnee Destinations (Communities)



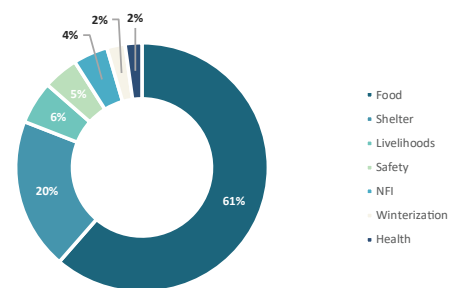
The pull factors for new arrivals



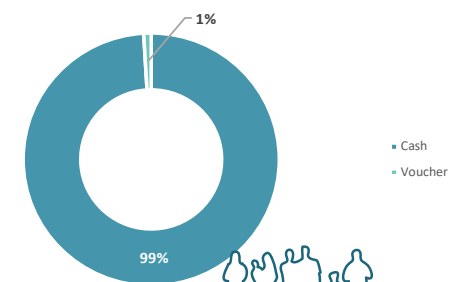
The push factors for departures



Priority Needs (for new arrivals)



Preferred modalities of assistance



* This figures reflect the number of movements between Jan-Mar 2024, noting that individuals may have been exposed to multiple displacements, for that reason moving may vary.