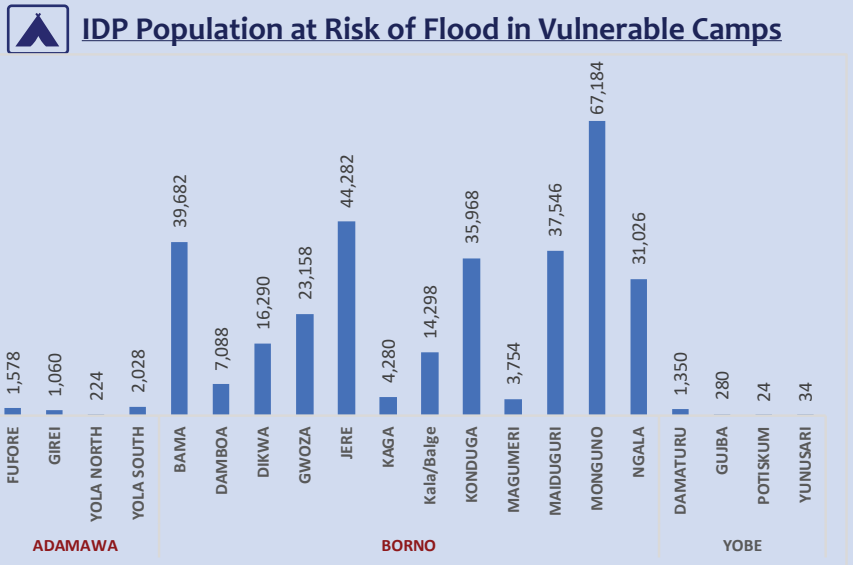
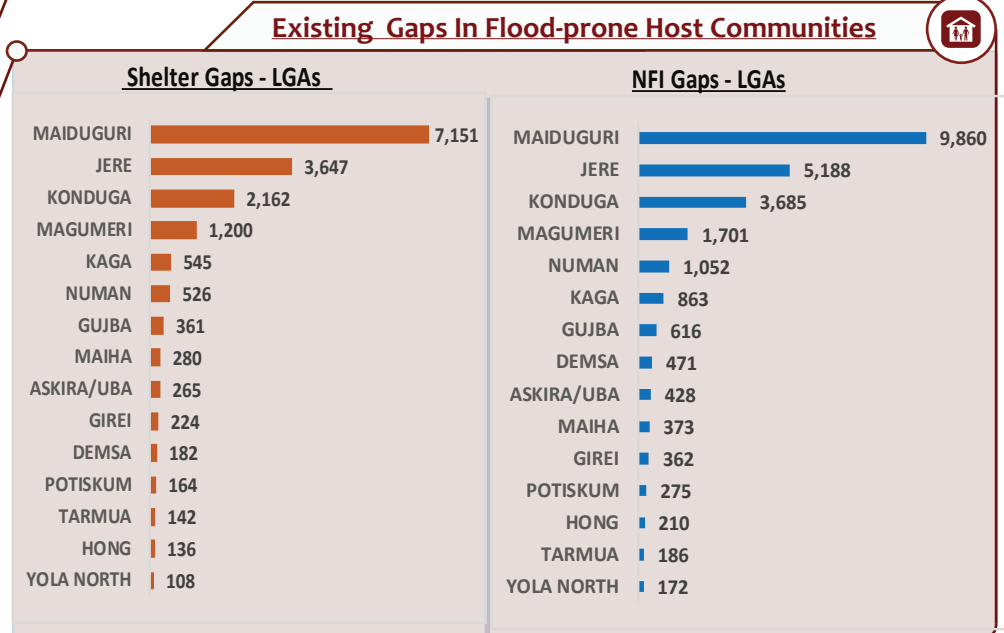
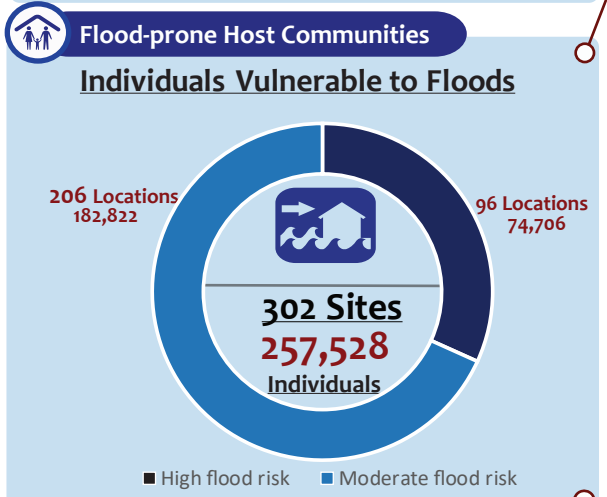
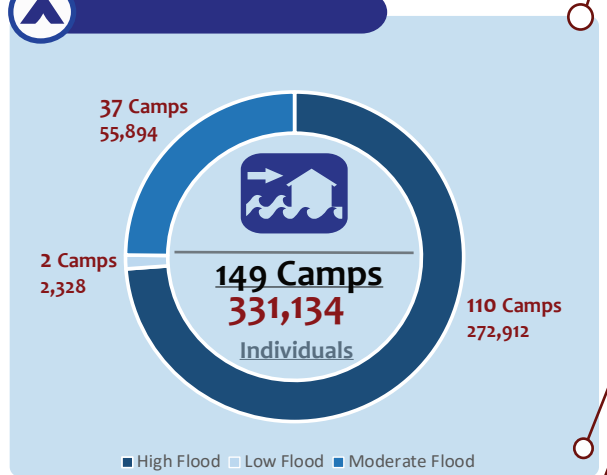
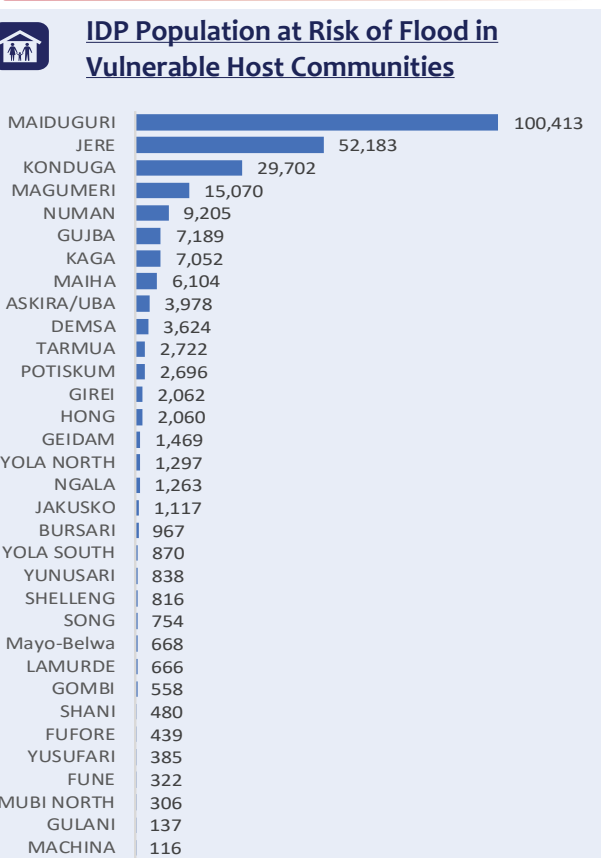
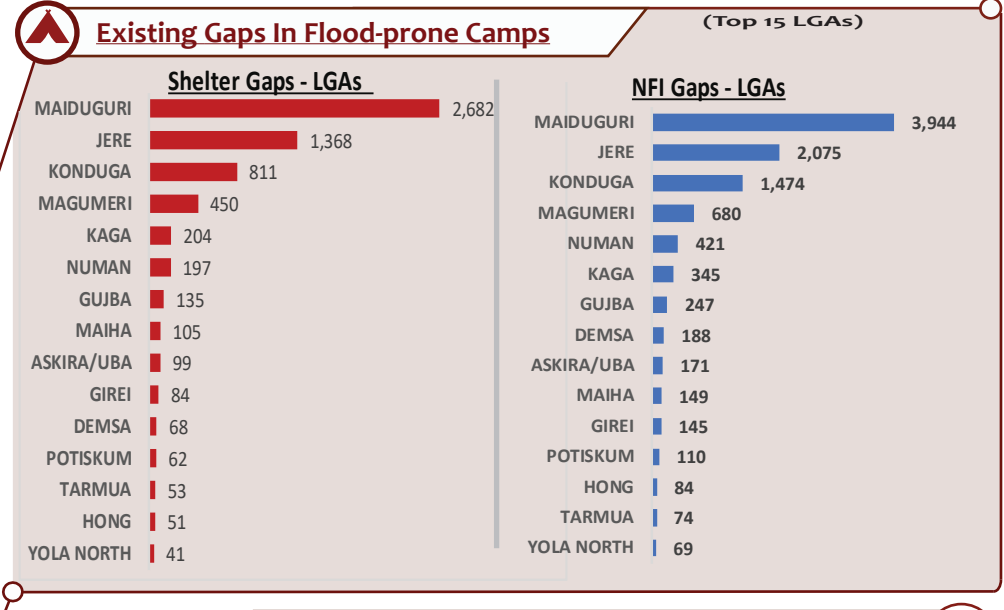
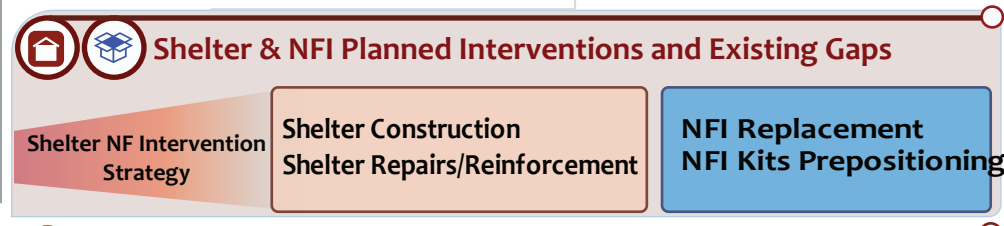
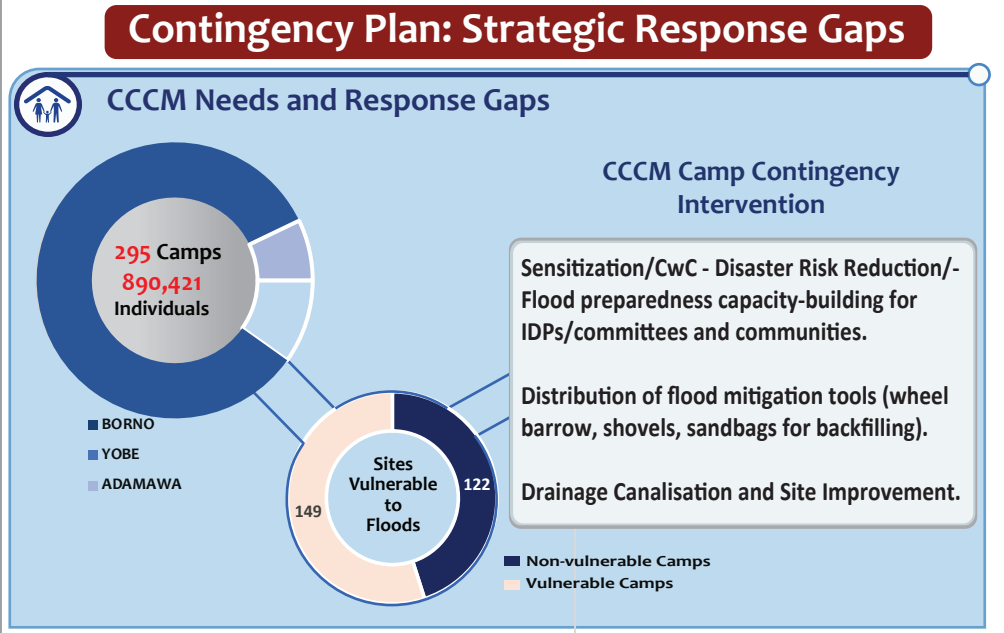


Overview

With the rainy season approaching in Northeast Nigeria - from May to September 2021-, it is expected that rainfall and storm events will have damaging consequences on living conditions of displaced persons both in camp sites and host communities, including hindered access for humanitarian actors in most vulnerable locations.

As a proactive measure to inform preparedness activities, the sector produced a targeted flood vulnerability mapping emphasizing on sector needs and gaps assessed to review the 2021 contingency plan and response strategy for CCCM, Shelter and NFI-related intervention. Information provided highlights the different levels of vulnerability, the severity of needs as well as prioritized locations for preparedness and response activities. The vulnerability analysis mapping and gap assessment were done using field assessments, DEM, soil drainage assessments, a review of arrivals trends, recorded site tracker submissions as well as data recorded from the 2019 and more recently 2021 flood and storm events.

Over 300,000 IDPs in 10 LGAs are considered vulnerable with 110 camps (hosting 272,912 IDP) are being considered as the highest risk having reported incidents from the past. A further 302 locations hosting 257,528 IDP in host communities are at risk.



References:
 • Batjes NH 2015. World soil property estimates for broad-scale modelling (WISE30sec). Report 2015/01, ISRIC - World Soil Information, Wageningen (with data set, available at www.isric.org),
 • Displacement Tracking Matrix (DTM) Rd XXXVII
 • CCCM Site Tracker Reports January - August 2021